

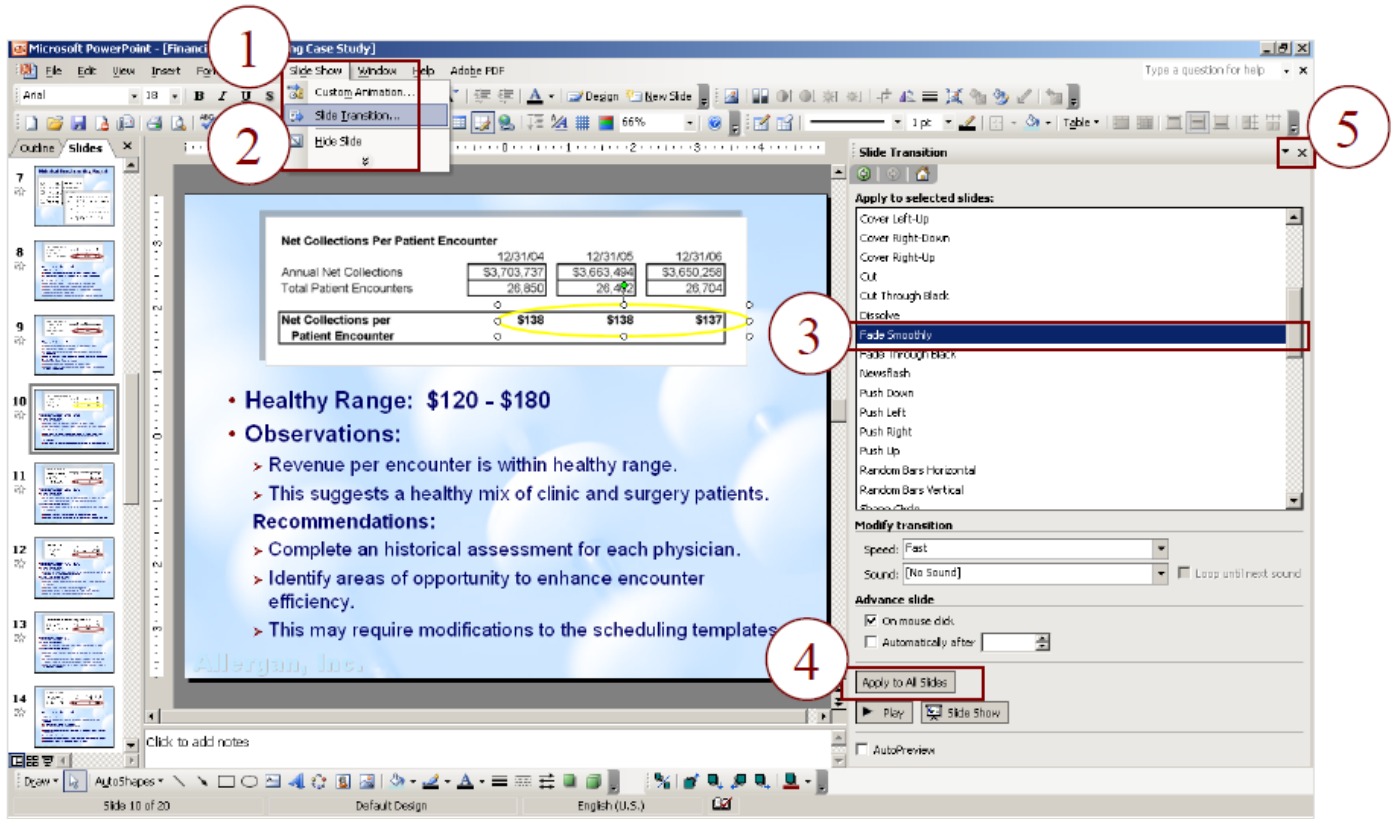
BSM Connection™ Online Library Software Tips – PowerPoint

Slide Transition: Fade Smoothly

Slide transition is a subtle but key element in a polished presentation. Whenever I edit your PowerPoint® files, this is the one of the very first revisions I make.

Dramatic slide transitions (*wiping down, spinning in, stretching across*) can be effective in emphasizing a specific transition point in the presentation, but more often they take away from the speaker and focus the audience on slide show effects rather than on the message. No slide transition effect at all is certainly an option, but it is less audience-friendly and does not reflect a fluent command of PowerPoint's® best features.

I always choose the “Fade Smoothly” effect for your presentations. It is simple, non distracting, and reflects the kind of transition motion you see most frequently in other media (i.e. television, movies and video).



To set your “Slide Transition” options:

1. From the menu bar, select the “Slide Show” option.
2. Click on the “Slide Transition” option from the drop down menu.
3. Click on “Fade Smoothly” under “Apply to selected slides” in the “Slide Transition” window that appears on the right-hand side of your screen.
4. Click on “Apply to All Slides.”
5. Close the “Slide Transition” menu window by clicking on the in the upper right-hand corner of the window.