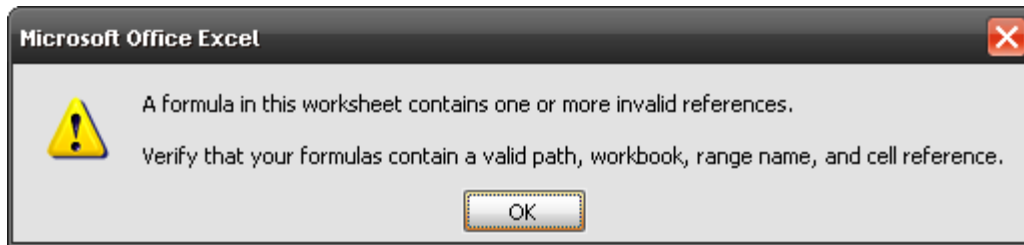


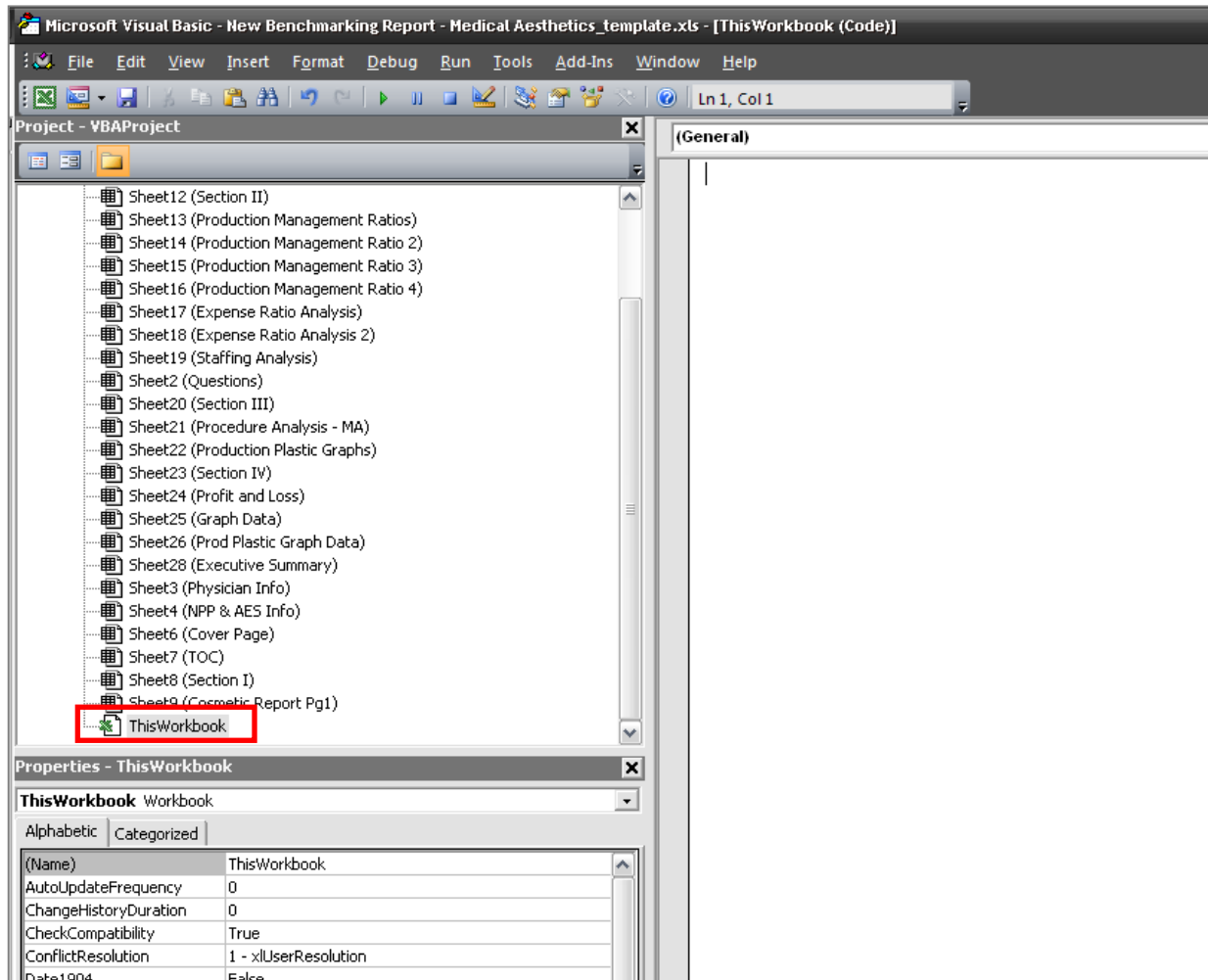
## Finding errors in a workbook

Have you ever built a workbook full of formulas and graphs only to have an error message pop up telling you the a formula in the worksheet contains one or more invalid references? Usually the problem is with a range in a graph that has been changed.



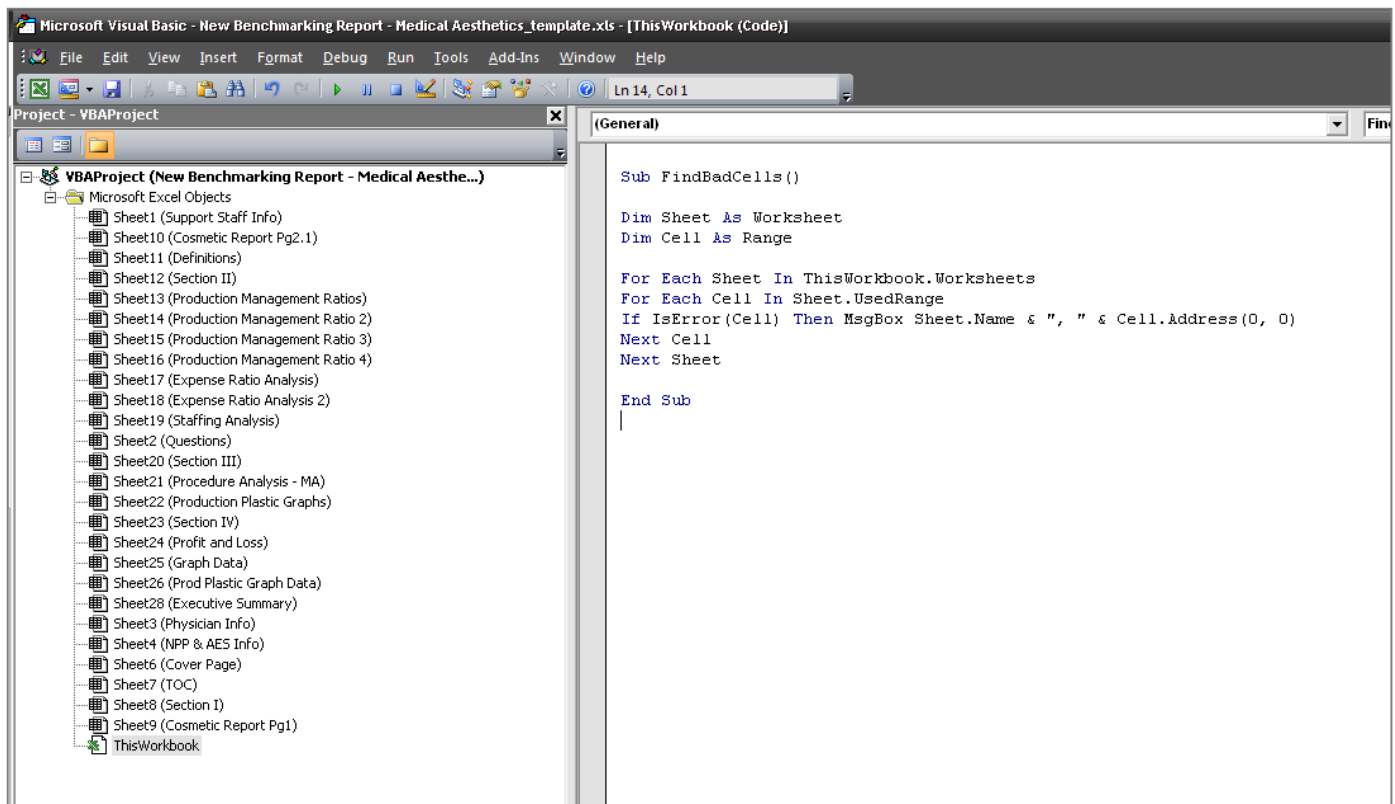
Here are some simple instructions to help you determine where the error is.

1. With the workbook open, open the Microsoft Visual Basic Window (Alt – F11) and select ThisWorkbook

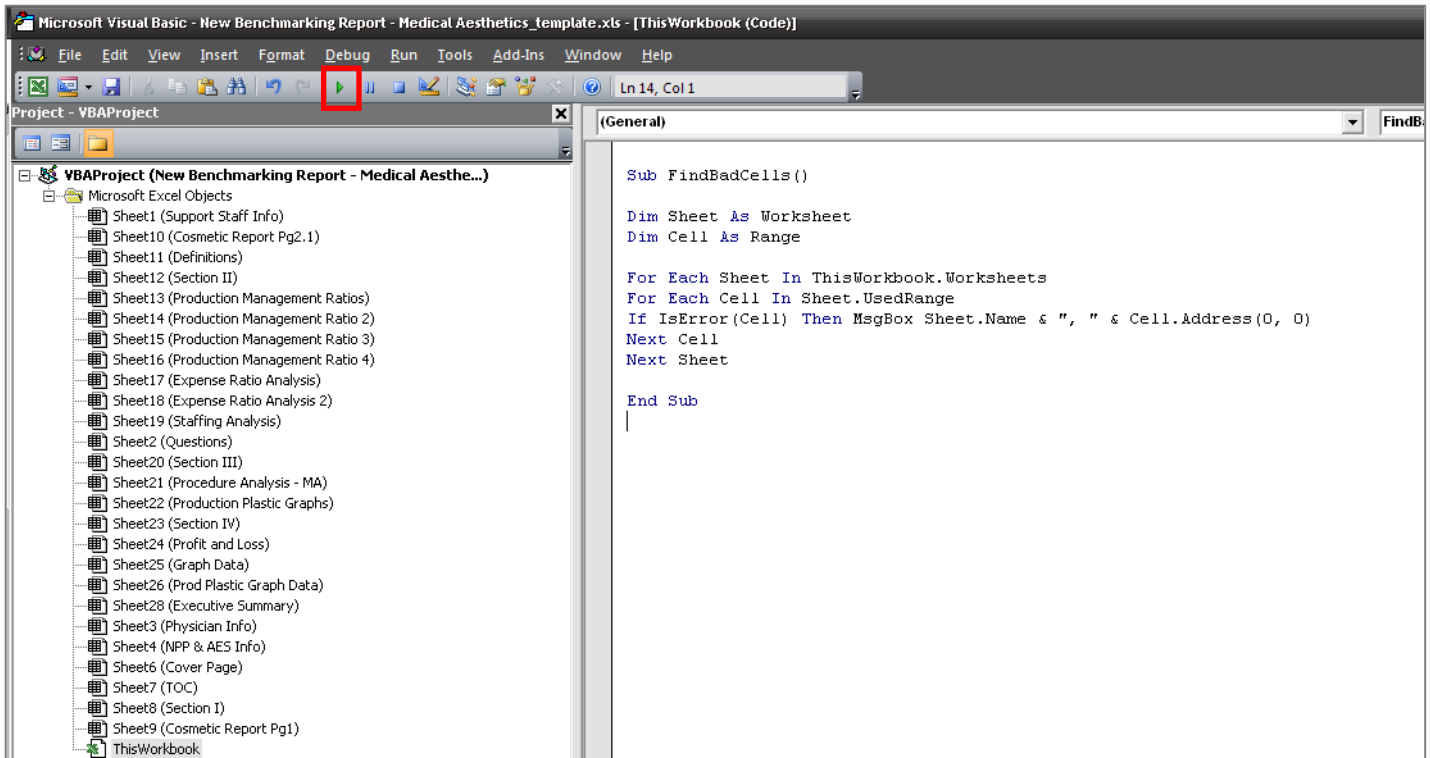


2. Enter the following code in the code window

```
Sub FindBadCells()  
  
Dim Sheet As Worksheet  
Dim Cell As Range  
  
For Each Sheet In ThisWorkbook.Worksheets  
For Each Cell In Sheet.UsedRange  
If IsError(Cell) Then MsgBox Sheet.Name & ", " & Cell.Address(0, 0)  
Next Cell  
Next Sheet  
  
End Sub
```



3. Press the Run Macro button



4. You should start receiving dialog boxes with the cell locations that contain errors

